

12G-GI is a 4K/UHD SDI video inline isolator, which is used to isolate the environmental noise in the SDI signal transmission link, block the DC voltage contact between the upstream and downstream equipment of the transmission, and protect signal transmission quality from static interference and continuous damage from ground loops.

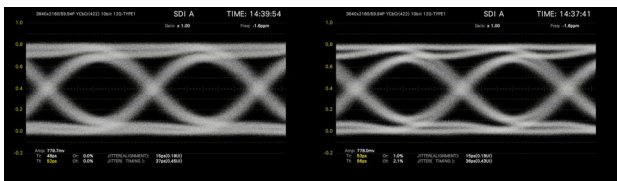
12G-GI can be used for a complete 12G/4K/8K UHD SDI video signal chain, and is compatible with all SDI formats including 6G, 3G, HD and SD. Its cylindrical insulating shell can effectively block DC voltage and environmental interference. Both ends of the isolator are equipped with standard size BNC connectors, and one end is equipped with an industry standard size mounting flange.



**4K  
8K**

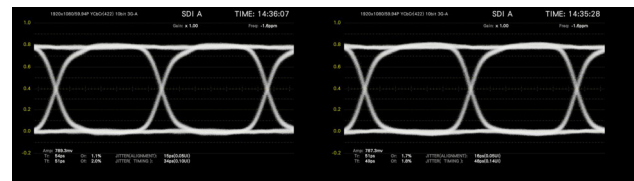
### Features

- Full DC galvanic isolation between equipment, both signal and ground path
- Protects equipment from damage by DC static and ground loop voltage buildup
- Strictly comply with 12G-SDI broadcast signal transmission quality standards
- Works with all lower SDI standards including 6G, 3G, HD and SD SDI
- Small size and lightweight, easy to carry and easy to install



12G-SDI Source  
 $V_{p-p} = 779.7\text{mV}$

After 12G-GI  
 $V_{p-p} = 778\text{mV}$



3G-SDI Source  
 $V_{p-p} = 789.3\text{mV}$

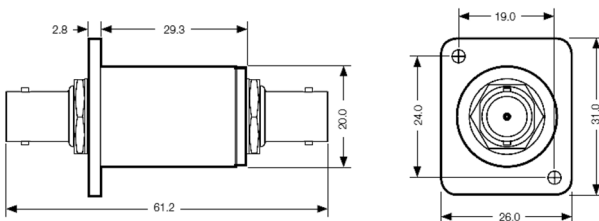
After 12G-GI  
 $V_{p-p} = 787.3\text{mV}$

### Accessories



Patch panel for six units

### Dimensions



### Technical Specifications

12G-GI	
Impedance	75 Ω
Bandwidth	<0.5 MHz to >12 GHz
Insertion loss	<0.02 dB
Amplitude roll-off	<0.02 dB @ 12 GHz
Return loss	>25 dB
Breakdown voltage	>100 V DC
Connectors	BNC female
Mounting flange	26mm×31mm
Mounting hole	Ø3.2mm, 19mm×24mm
Weight	37g

Design and specification are subject to change without notice

**INCAM Systems Co., Ltd.**

Building B6, North Park, No.315 Xiqing Road, Yangliuqing Town, Xiqing District, Tianjin, China



+86-22-2794 5135



info@incamsys.com



www.incamsys.com